



MAUAO OCEAN HOE SERIES 2023



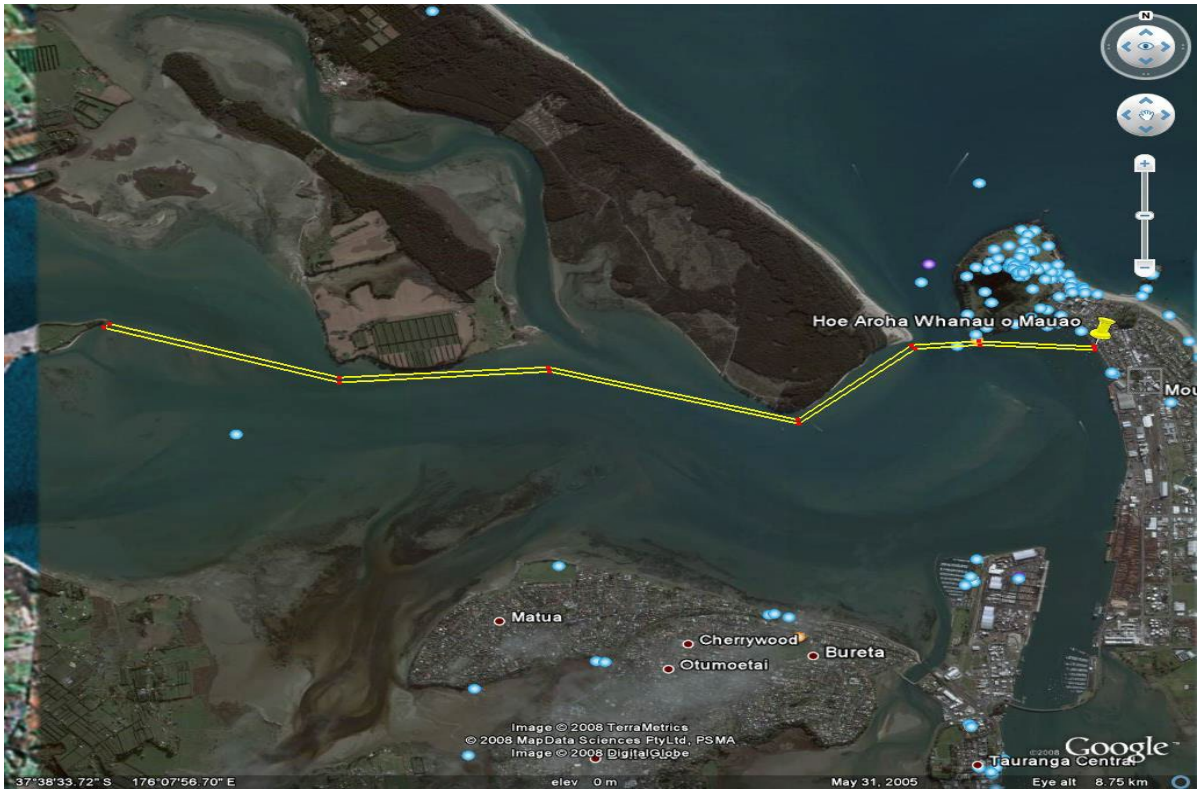
Option 1 - W6 18km Course - Pilot Bay to Omanu Surf Club Return



Option 1 - W1/W2/W3/J19/Novice 10km Course – Pilot Bay to Motu Otau Return



Option 2 – W6 18km Course – Pilot Bay to Motuhoa Return



Option 2 – W1/W2/W3/J19/Novice 10km Course – Pilot Bay to Rangiwaea Return



Option 3 – W6 18km Course – Pilot Bay up Matakana Surf Side Return



Option 3 – W1/W2/W3/J19/Novice 10km Course – Pilot Bay up Matakana Surf Side Return





MAUAO OCEAN HOE SERIES 2023



Safety Rules

All paddlers must comply with NKOA safety rules and regulations as follows:

W6 Waka:

- must be of a seaworthy design and construction
- must carry adequate bailers (2)
- must carry one flotation device per paddler (6). Junior paddlers must wear their lifejackets during the race.
- must carry two spare paddles
- must be fitted with spray skirts
- Kiato and Ama must be securely lashed. Extra lashings in case of repairs are necessary
- must be fitted with a tow rope. One end must be securely fitted to the front taumanu with the rest either in a bag or fastened to the front taumanu

W1/W2 Waka:

- must be of a seaworthy design and construction
- Waka with cockpits must carry bailer and must be fitted with spray skirts. Rudder optional but recommended for open water / rough water
- must carry one flare
- Must carry one flotation device per paddler
- Must carry one spare paddle

Paddlers/Crews:

- must be capable of handling their Waka in the expected conditions
- must be able to swim and be comfortable in the expected conditions
- must be trained in and capable of self rescue techniques e.g. righting a capsized Waka
- must have a degree of skill and fitness to enable them to finish the race in any conditions that might be expected
- must be dressed for the expected conditions
- All steerers and team captains must attend the race briefing

The Race Director has the right during the course of the race to withdraw any team, if in his/her opinion, it is considered that the crew is in danger or likely to be unable to complete the race. Race organisers will arrange official support boats, which will be marked with orange flags.

